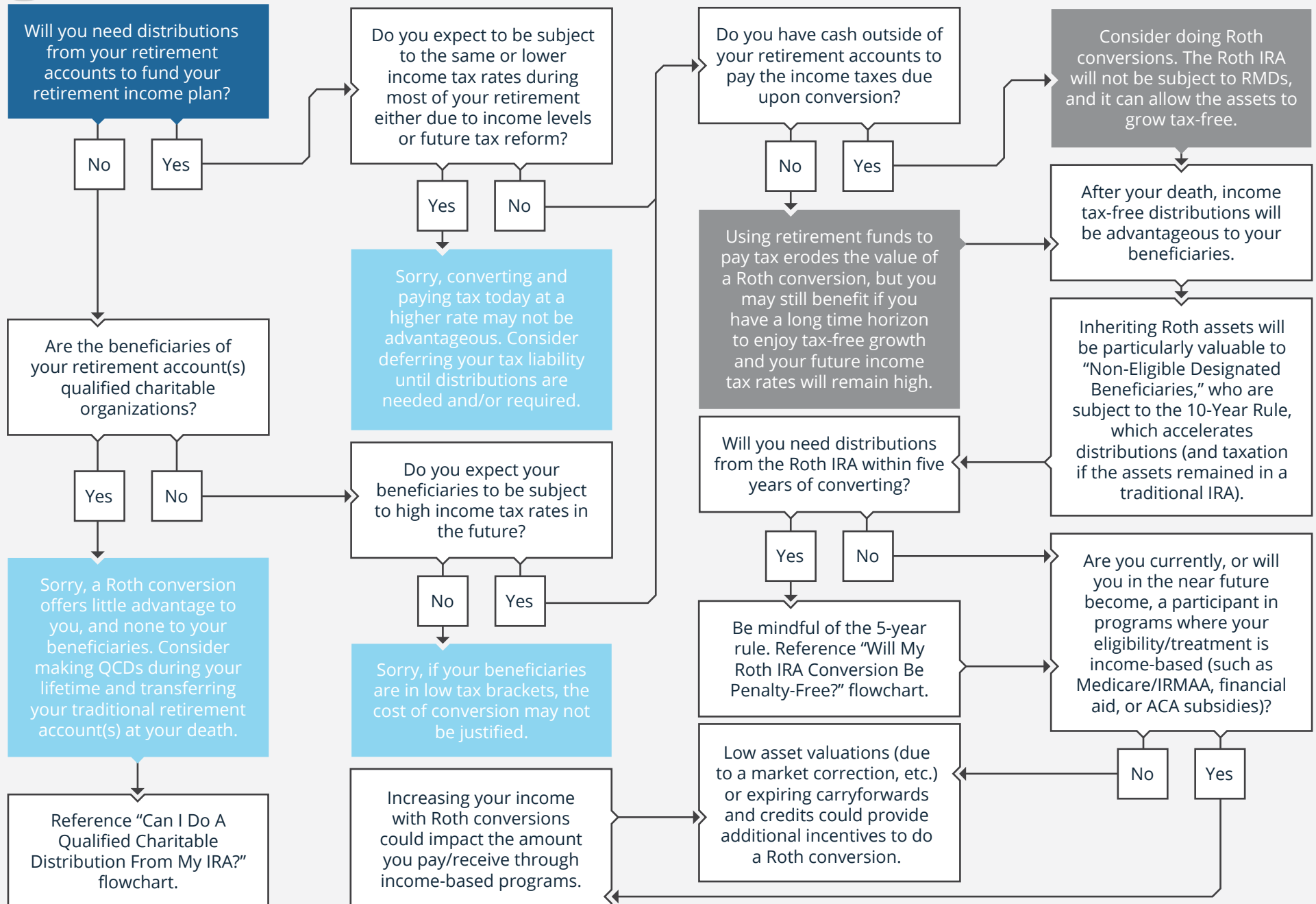




Start Here



Securities offered through LPL Financial, Member FINRA/SIPC. Investment advice offered through Strategence Capital, a registered investment advisor. fpPathfinder and Strategence Capital are separate entities from LPL Financial

This material was created for educational and informational purposes only and is not intended as ERISA, tax, legal or investment advice. If you are seeking investment advice specific to your needs, such advice services must be obtained on your own separate from this educational material.

Traditional IRA account owners have considerations to make before performing a Roth IRA conversion. These primarily include income tax consequences on the converted amount in the year of conversion, withdrawal limitations from a Roth IRA, and income limitations for future contributions to a Roth IRA. In addition, if you are required to take a required minimum distribution (RMD) in the year you convert, you must do so before converting to a Roth IRA.

A Roth IRA offers tax deferral on any earnings in the account. Qualified withdrawals of earnings from the account are tax-free. Withdrawals of earnings prior to age 59 ½ or prior to the account being opened for 5 years, whichever is later, may result in a 10% IRS penalty tax.

Graig Stettner, Financial Advisor & Partner

graug.stettner@strategencecapital.com | 260.236.0385 | www.strategencecapital.com